

**Analysis of blood immune biomarkers and fecal microbiome in subjects with and without malignant solid tumors: report from a feasibility study**

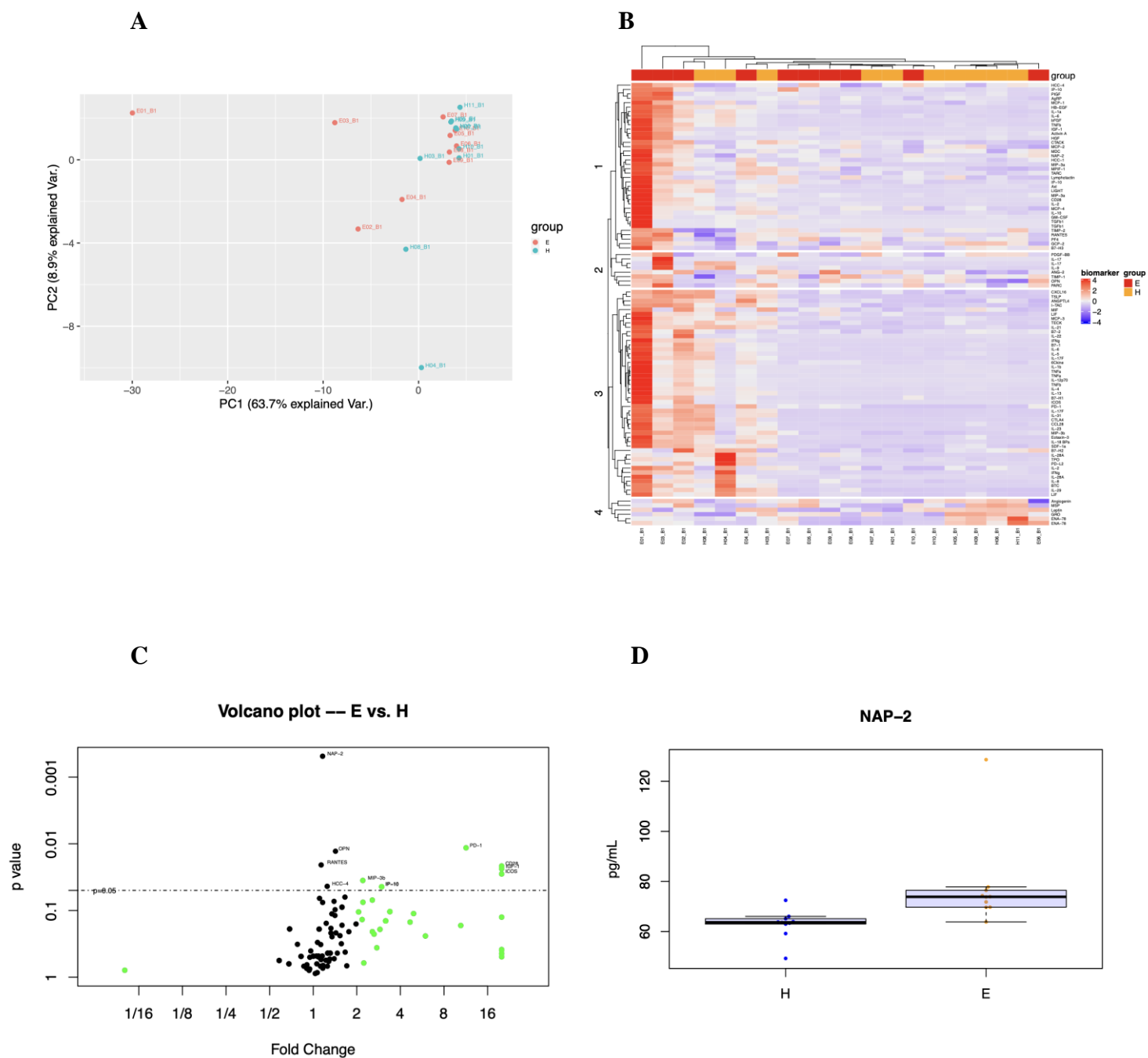
Haoran Gao<sup>2</sup>, Devansh Acharya<sup>1,2</sup>, Eliot N. Haddad<sup>3</sup>, Sarah S. Comstock<sup>3</sup>, Rick Jorgensen<sup>2</sup>, Muhammad Hamdan<sup>1</sup>, Hussein Al-Ahmad<sup>1</sup>, Brittani Thomas<sup>1</sup>, Ushasree Chamarth<sup>1</sup>, Venu Gangur<sup>2</sup>, Gordan Srkalovic<sup>1\*</sup>

<sup>1</sup>Herbert-Herman Cancer Center, E W Sparrow Hospital, Lansing, MI 48912, United States

<sup>2</sup>Food Allergy & Immunology Laboratory, Department of Food Science and Human Nutrition, Michigan State University, East Lansing, MI 48824, United States

<sup>3</sup>Microbiome Laboratory, Department Food Science and Human Nutrition, Michigan State University, East Lansing, MI 48824, United States

**\*Corresponding Author:** Gordan Srkalovic, Herbert-Herman Cancer Center, E W Sparrow Hospital, Lansing, MI 48912, United States. **E-mail:** Gordan.Srkalovic@Sparrow.org. <https://orcid.org/0000-0003-3519-04090>



**Figure S1. Analysis of immune biomarkers in subjects without malignant tumors (healthy) vs. existing cancer patients on immunotherapy. A.** Plot of PC1 and PC2 values of healthy (H) and existing patients treated with immunotherapy (E). **B.**

Heatmap of 99 biomarkers in healthy (H) and existing patients treated with immunotherapy (E). **C.** Volcano Plot comparing fold change and p-values of 99 biomarkers healthy (H) and existing patients treated with immunotherapy (E). Each point represents a biomarker. **D.** Boxplot of NAP-2 in healthy (H) and existing patients treated with immunotherapy (E).